

# World Radon Solutions Database

## Existing Buildings

[www.worldradonsolutions.info](http://www.worldradonsolutions.info)

### Existing Buildings

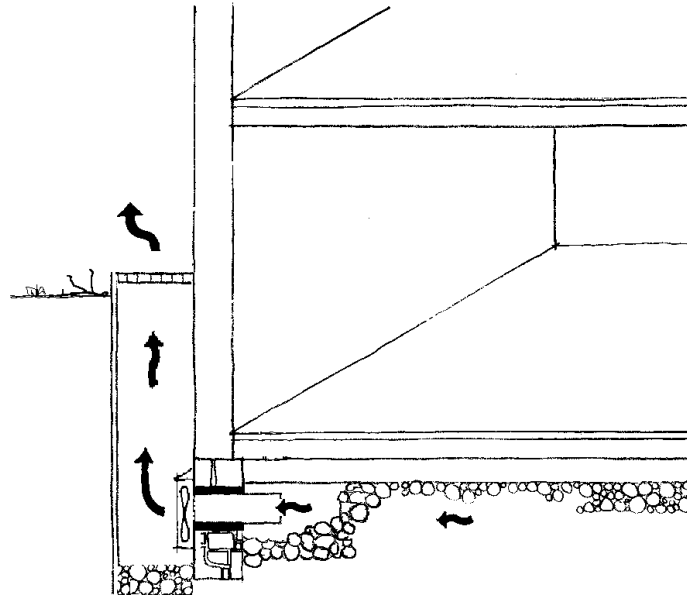
### Case Study

Sheet N°

**Type** | Wall radon sump

**Country** | Switzerland

### Illustration



## **Description**

The soil air is extracted under the floor. The pipe entry must be fitted tightly. According to the properties of the soil and the size of the building, one extract point may be enough, or several may have to be installed. Otherwise, the exhaust vent should be sheltered (snow, rain) and be at least 2 metres away from windows and doors.

## **Selection**

For all floor types configurations, except: natural soils

## **Pre-installation Diagnosis**

None try it!

## **Radon reduction achieved**

Radon reduction from 900 Bq/m<sup>3</sup> down to 90 Bq/m<sup>3</sup>

## **Problems**

The exhaust should be at least 2 metres away from windows and doors, so that the severely contaminated air does not reinfiltrate the interior.

Sealing: It's very important to seal around the pipe to prevent air leakage.

## **System enhancements**

The largest possible cavity is created around the pipe, by hand or using a vacuum cleaner.

## **Further Information**

More information about this system in the "Swiss Radon Guide" could be bought or downloaded from our website [WWW.CH-RADON.CH](http://WWW.CH-RADON.CH)

[www.bag.admin.ch/strahlen/ionisant/radon/pdf/d/Radonhandbuch-en.pdf](http://www.bag.admin.ch/strahlen/ionisant/radon/pdf/d/Radonhandbuch-en.pdf)

or direct from

Swiss Federal Office of Public Health

Division of Radiation protection

Radon Technical and Information Centre

Roserens Georges-André

CH-3003 BERN

E-Mail: [georges.roserens@bag.admin.ch](mailto:georges.roserens@bag.admin.ch)

FAX: ++41 (0)31 322 83 83

Date Prepared : July 2003